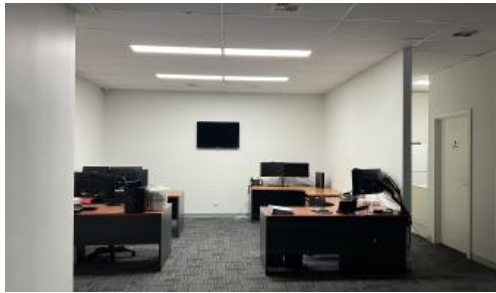
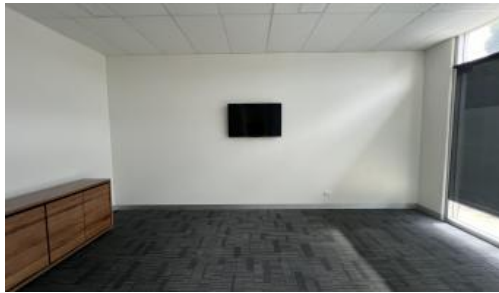


Sold



314A Bay Rd, Cheltenham



Impress Your Business Base with this High-Profile Office Building!

Looking for a prestigious office space that speaks volumes about your business? Look no further! Situated on the bustling Bay Road in Cheltenham, this two-level office building offers prime exposure and top-notch quality to elevate your brand. Office/Showroom floor space of approx* 260sqm. Total Building floor space of 312sqm approx* Land 183sqm

Here's why this property stands out:

- ▣ **Main Road Exposure:** Your business will be noticed by all passing by on the busy Bay Road, ensuring maximum visibility and brand exposure.
- ▣ **Convenient Access:** With rear access and four off-street car parks, commuting and parking are a breeze for you and your clients.
- ▣ **Versatile Warehouse Space:** A spacious 52sqm warehouse area provides ample room for storage or additional parking, offering flexibility to suit your business needs.
- ▣ **Proximity to Amenities:** Close to Southland Station and Shopping Centre, your team will appreciate the convenience of nearby retail and transport options.
- ▣ **Move-in Ready:** This meticulously maintained office comes fully furnished, allowing you to hit the ground running and focus on what matters most – your business.
- ▣ **Modern Amenities:** Enjoy the convenience of a kitchenette, separate

🚗 6 📏 183m2

Price	SOLD for \$1,250,000
Property Type	Commercial
Property ID	864
Land Area	183 m2
Office Area	260 m2
Warehouse Area	52 m2

Agent Details

Matthew Kenny - 0413743876
Graeme Lund - 0418 539 371

Office Details

Cheltenham
15/148 Chesterville Road
Cheltenham VIC 3192 Australia
1300 653 004

