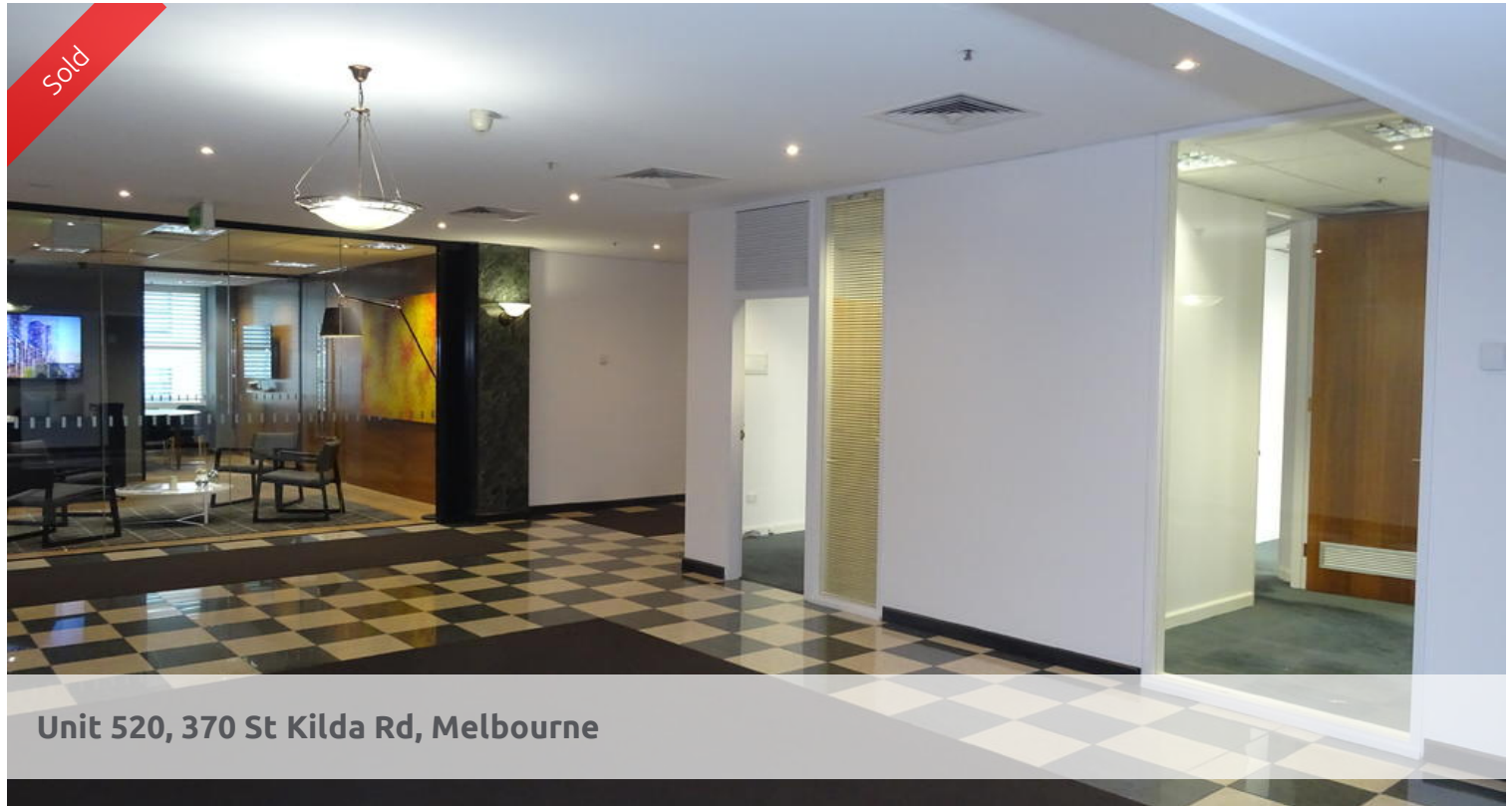


Sold



Unit 520, 370 St Kilda Rd, Melbourne



Prominent Office on Premier Floor, perfect SMSF Investment



This Suite Of 48m2 approx, is located on the 5th Floor.

- Currently partitioned as open plan and 3 offices
- Has external windows
- Premium position in Lift Lobby
- Access available to Water & Waste
- May suit medical use STCA
- 1 car park included, with Commercial parking onsite
- Free Business meeting facilities on Roof
- Coffee and food venues surround the building
- Tram access at the front of the building
- Only \$218,000 plus GST ONO

The above information provided has been furnished to us by the vendor/s. We have not verified whether or not that information is accurate and do not have any belief in one way or the other in its accuracy. We do not accept any responsibility to any person for its accuracy and do no more than pass it on. All interested parties should make and rely upon their own inquiries in order to determine whether or not this information is in fact accurate.

Price	SOLD for \$210,000
Property Type	commercial
Property ID	253
Land Area	48 m2
Office Area	48 m2

Agent Details

Robert Heath - 0418335170

Office Details

Cheltenham
15/148 Chesterville Road
Cheltenham VIC 3192 Australia
1300 653 004

