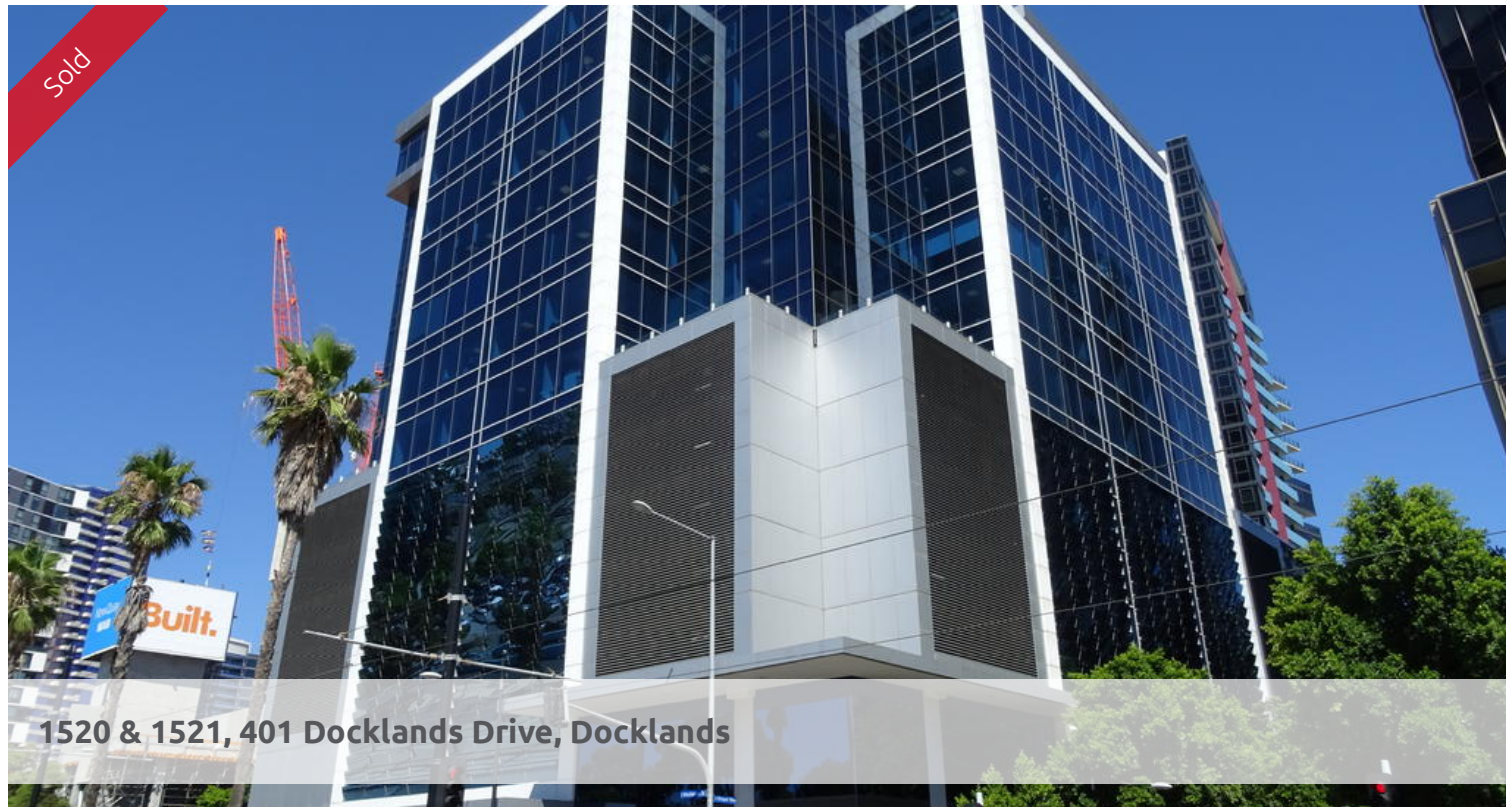
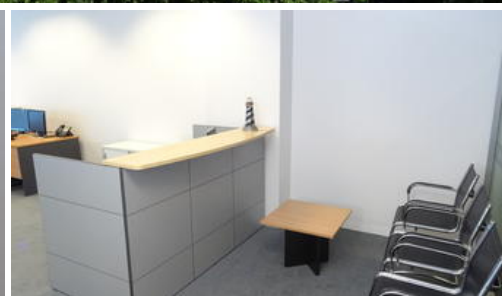
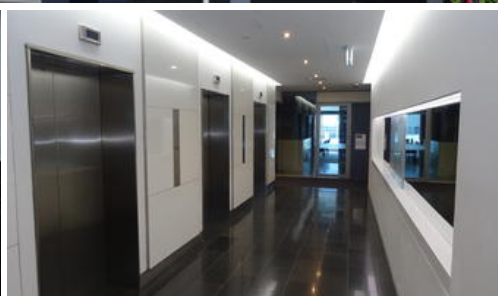
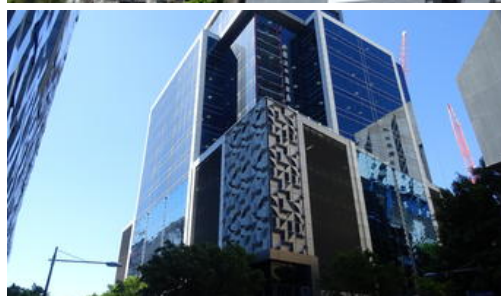


Sold



1520 & 1521, 401 Docklands Drive, Docklands



## WHEN ONLY THE BEST WILL DO!

These amazing office suites have been combined to provide approximately 104 square metres of light filled open plan office space, with views over Docklands and the Harbour.

The Property also has two side-by-side Car Parks as accessory units located in a prime position within the Corporate Parking Area.

### Other Great Features:

- The carpets, paintwork and mechanical and electrical systems are in tiptop condition.
- A large Public Car park on Site
- Great end of trip facilities, bike room, showers & steam room
- First class air-conditioned Gym
- Concierge, Building Manager and full video security
- 24/7 access with AC
- Free tram service near the front door
- The new Harbour Town shopping centre and abundant cafe's & quality restaurants
- The New Quay Harbour is just a minute away



2

<b>Price</b>	SOLD for \$700,000
<b>Property Type</b>	commercial
<b>Property ID</b>	208
<b>Office Area</b>	104 m2

### Agent Details

Robert Heath - 0418335170

### Office Details

Cheltenham  
15/148 Chesterville Road  
Cheltenham VIC 3192 Australia  
1300 653 004



The above information provided has been furnished to us by the vendor/s. We have not verified whether or not that information is accurate and do not have any belief in one way or the other in its accuracy. We do not accept any responsibility to any person for its accuracy and do no more than pass it on. All interested parties should make and rely upon their own inquiries in order to determine whether or not this information is in fact accurate.